

Forest Conservation as Big and Bold as Mount Shasta

SHASTA TIMBERLANDS WORKING FOREST CONSERVATION EASEMENT PROJECT

Straddling the crest that divides the Sacramento and Klamath River basins, the *Shasta Timberlands Working Forest* protects the headwaters of these mighty rivers. The property encompasses the high ridges along the northeastern flank of Mount Shasta and the meadows and springs that feed clean, cold water into these essential watersheds.

Pacific Forest Trust, TC&I Shasta, LLC, the landowner, and its forest manager Campbell Global, LLC, are working in partnership to establish a 9,125-acre conservation easement that will sustain the property as working forest and secure lasting connections with millions of acres of the neighboring Shasta and Klamath National Forests. This is a rare opportunity to create a vast, integrated expanse that will be actively managed for climate resiliency, critical wildlife habitats, increased carbon stores, reduced risks of wildfire, and water security for fish, farms and people — all while supporting the resource-based economy of a disadvantaged county.

By maintaining this spectacular property — 10 times the size of Golden Gate Park — in private ownership, management guided by the conservation easement will protect these resources on behalf of the public at a fraction of the cost of public ownership while ensuring continued private investment in the property's long-term stewardship. This is an exemplary partnership that promises integrated solutions to environmental challenges at a landscape scale.



An Awesome Volcanic Landscape Bursting with Life

Abundant springs emerge amid rocky spires and cinder cones, feed by deep winter snows. Large, rare alpine wet meadows spread below talus slopes and form the headwaters of many creeks and lush riparian habitats below. The property includes much of Ash Creek Butte, an 8,360' shield volcano fringed by alpine fell-fields, subalpine conifers, and rare montane chaparral communities. Thousands of acres of diverse, well-managed conifer forests carpet the slopes, dominated by Shasta red fir and white fir and interspersed with mountain hemlock, lodgepole pine, sugar pine, incense cedar, and ponderosa pine.





Stronghold for Wildlife in a Hotter, Drier California

As climate is changing, Mt. Shasta is an essential crossroads for species on the move, connecting the Modoc Plateau and Cascades and Klamath ranges with the Klamath and Sacramento basins. Shasta Timberlands plays a key ecological role within the checkerboard of National Forest that surrounds it. With slopes that rise more than 3,000' in elevation and aspects facing all directions, together with abundant water, the property's tremendous variation in habitats provides plants and wildlife with significant options as they seek to adapt to climate change.

The property's biodiversity is highly ranked statewide by the California Dept. of Fish and Wildlife, supporting an estimated 250 species of fish, wildlife, and plants, including 25 imperiled species such as northern spotted owl, fisher, Pacific marten, Cascade frog, and the McCloud River redband trout. Gray wolf is known to use the property, too. The proposed conservation easement designates 3,000 acres — a third of the property — to be managed solely for special habitat values.

Securing Cold Water Flows for People and Wildlife

Mount Shasta reaches high to capture passing storms, yielding dependable snow and rain on Shasta Timberlands. This cold water pours out from springs that feed year-round tributaries to the McCloud River, flowing into Shasta Lake and from

there to farms and cities as far away as San Diego. Antelope Creek also emerges from the property, an abundant water source for irrigated agriculture in the Klamath basin. This project will ensure these headwaters remain undisturbed, with secure flows critical to all Californians.

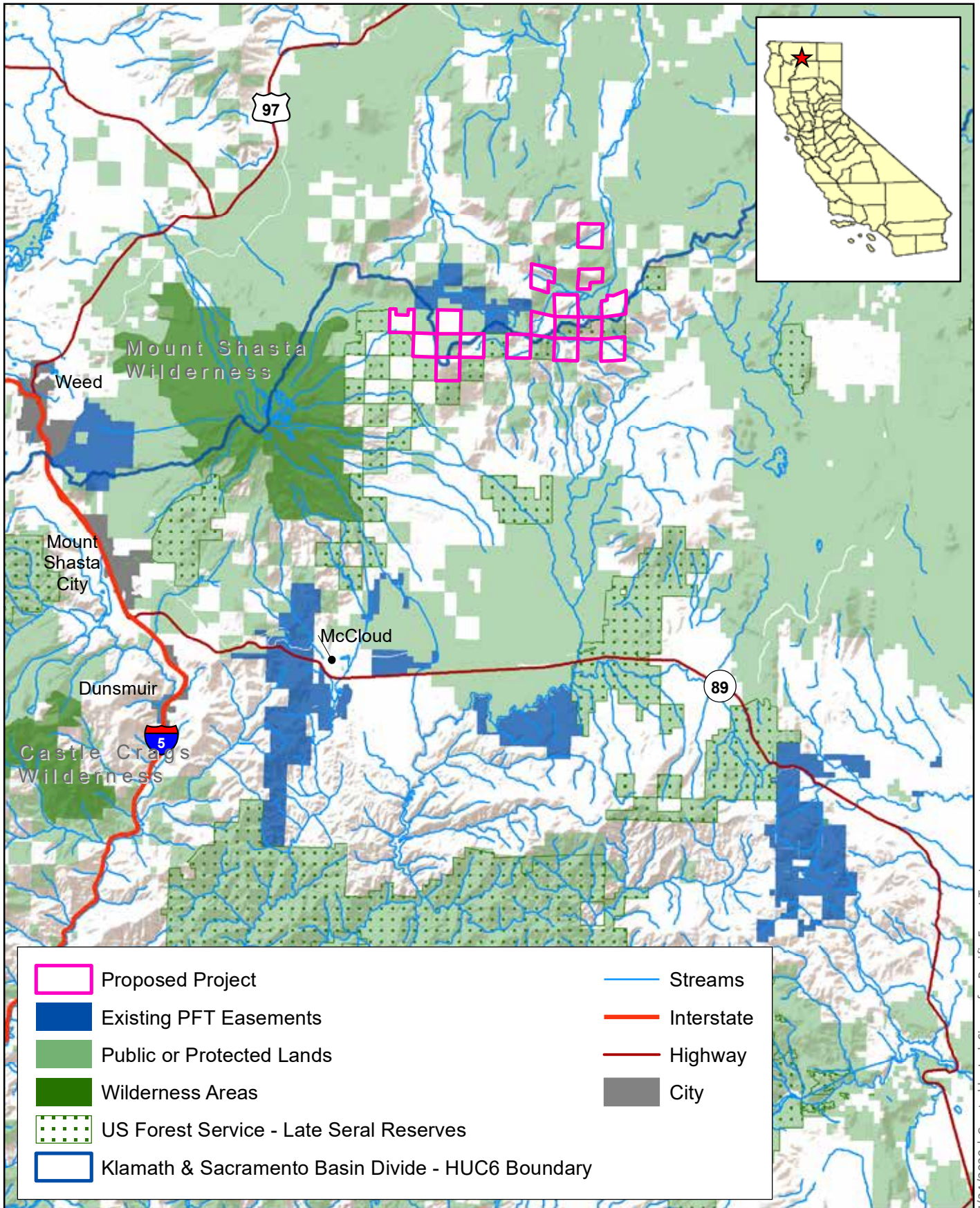
Forestry for Climate and Community Resilience

Guided by the terms of the conservation easement, productive forestry on Shasta Timberlands will continue to provide sustainably harvested wood and local jobs critical to Siskiyou County. Forestry is also an indispensable tool in realizing the project's goals for a healthy, resilient headwaters forest better able to withstand wildfire, drought, and climate stress. Active forest management will emphasize diverse forest stands, with more large trees and fewer small ones. This will also enhance habitat quality and protect watershed function. Timber harvest will always be less than what the forest can regrow in a decade, resulting in the permanent storage of more atmospheric carbon than before.

World-Class Recreational Opportunities

Shasta Timberlands is integral to the Mount Shasta outdoors experience. The connections with surrounding National Forest, the nearby Wilderness Area and the Brewer Creek trailhead to the summit enhance recreational options for local people and visitors. The conservation easement will assure non-motorized, day-time access by the public.





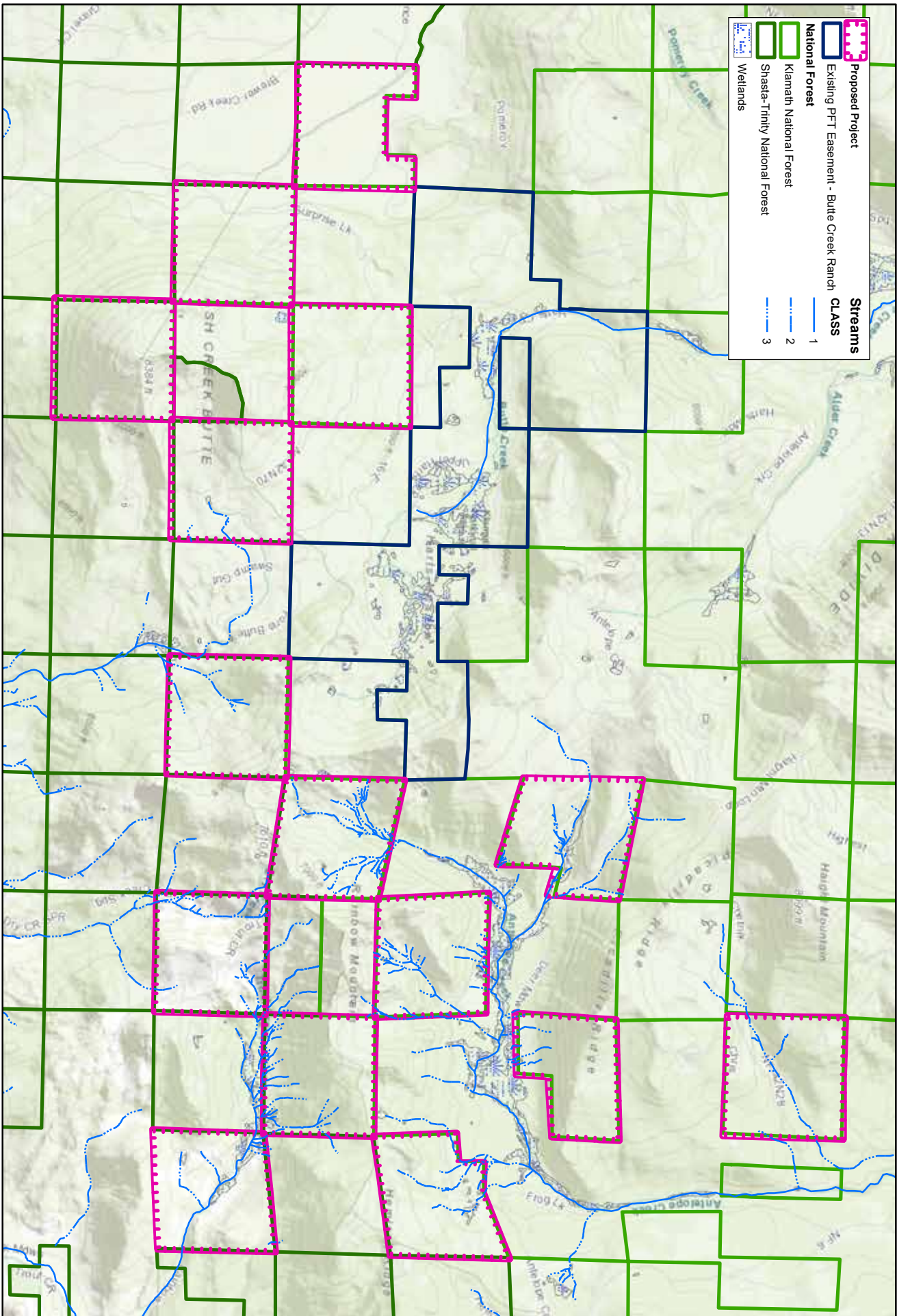
7/24/2020 | Created by Jack Singer for Pacific Forest Trust.



PACIFIC FOREST TRUST

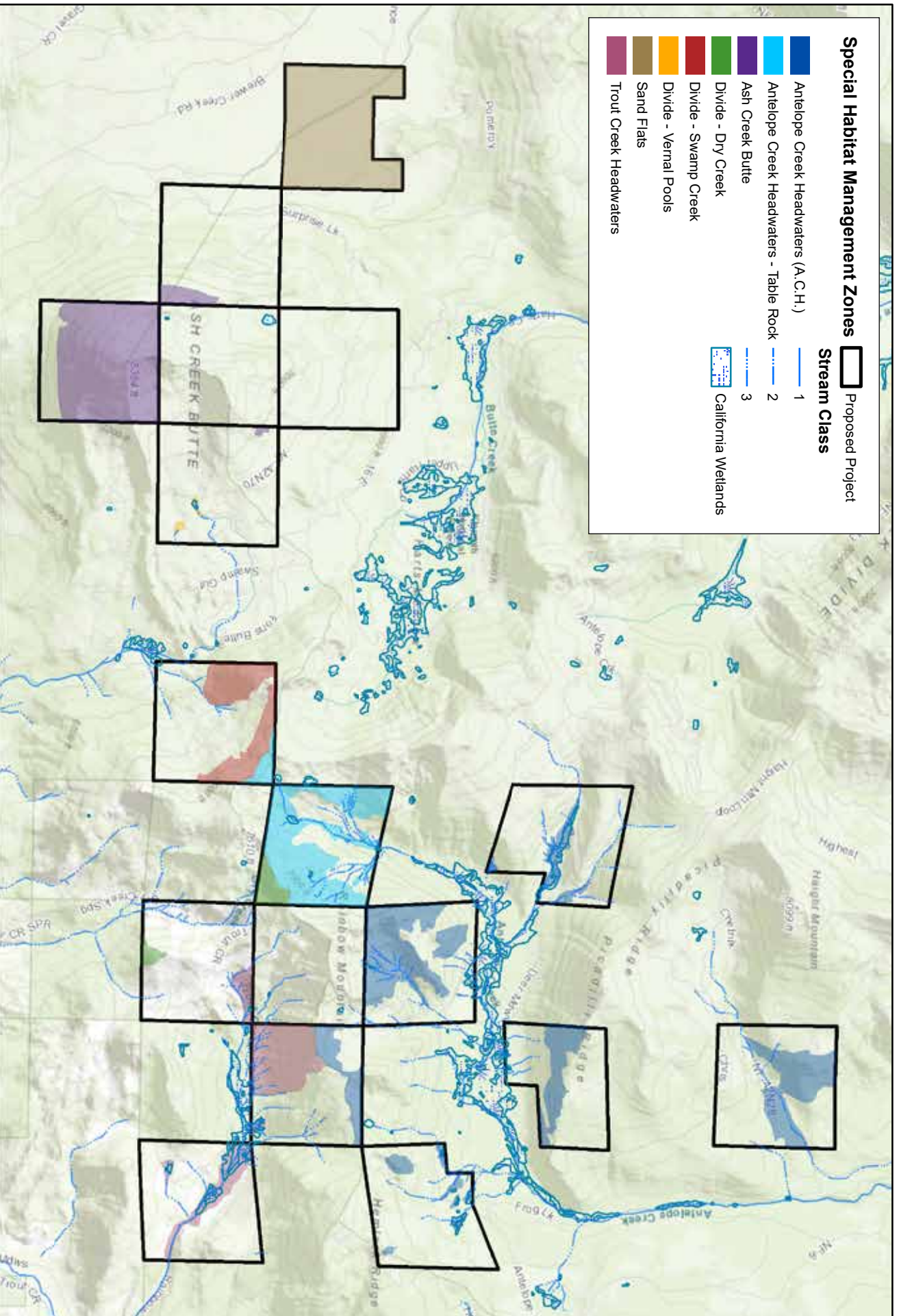
Proposed Shasta Timberlands Conservation Easement Project Overview

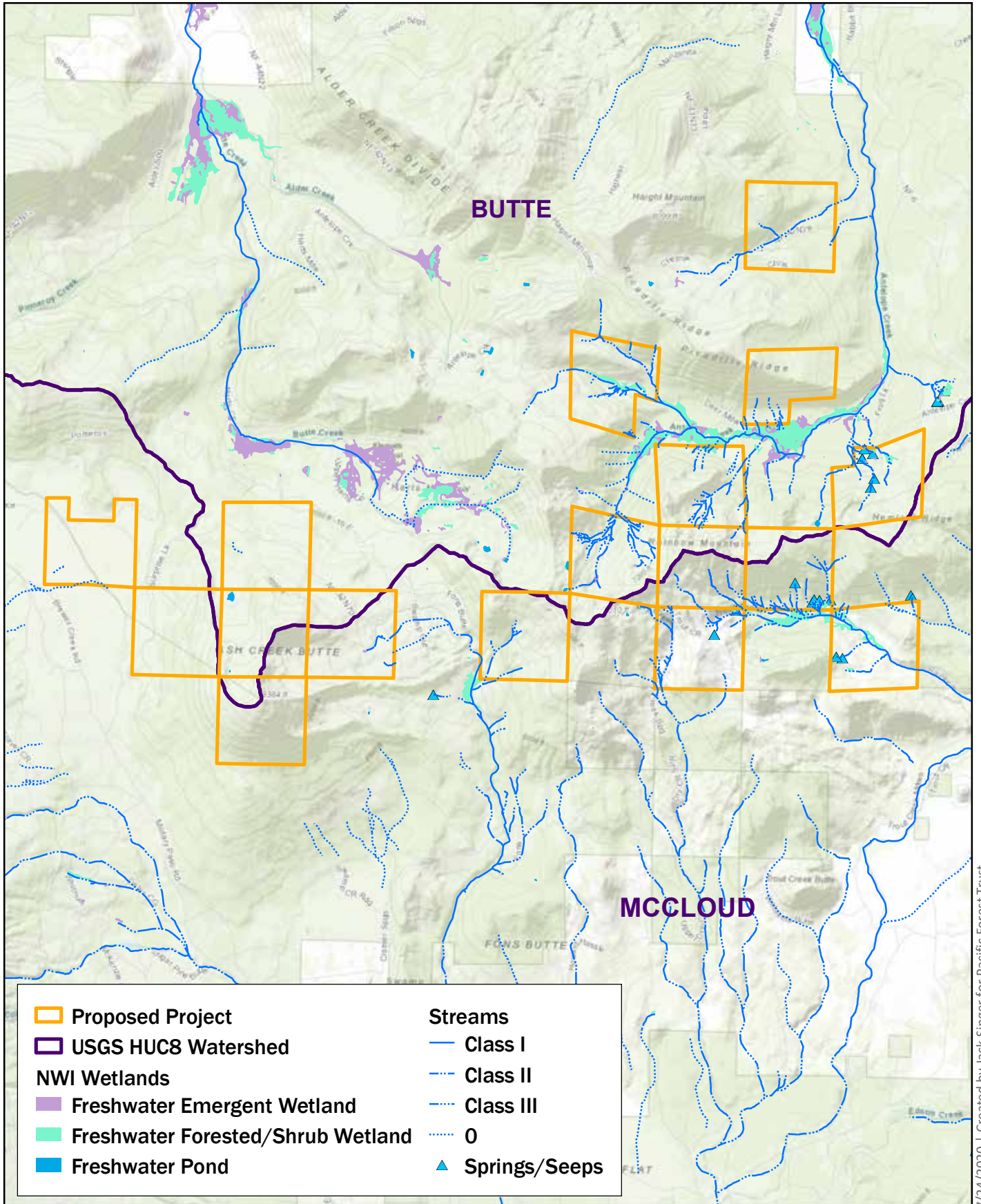
Overview





Proposed Shasta Timberlands Conservation Easement Project Management Zones and Water Resources





7/24/2020 | Created by Jack Singer for Pacific Forest Trust.

