

# Conserving Key Water and Wildlife Connections on the Siskiyou Crest

## MOUNTCREST WORKING FOREST CONSERVATION EASEMENT

Managed for wood, water, and wildlife for generations, the Mountcrest Working Forest has seen train robbers, surveyors, and U.S. Presidents in its 100-year history with the Parsons family. Mountcrest sits atop the Siskiyou Crest, just 8 miles south of Ashland, Oregon, bordering California. Myriad creatures live within Mountcrest's 2,065 acres of verdant and diverse habitats. The Parsons are working with Pacific Forest Trust to grant a working forest conservation easement—making sure this landscape always provides economic and ecological benefits to the public.

### **Fresh, Clean Water for Fish, Wildlife... and Us!**

Mountcrest's undisturbed springs, seeps, and ponds provide drinking and irrigation water for downstream homesteads, farms and communities. Its wet meadow, increasingly rare in the mountains, is a natural reservoir that soaks up winter rain and snow, and then meters it out to thirsty creeks over the dry summer months. The property is headwaters for five creeks, including Neil Creek, which flows into the Rogue River Basin and hosts steelhead and cutthroat trout.

### **Diverse Habitats Help Wildlife Adapt**

Mountcrest Working Forest is part of the Klamath-Cascade—where five eco-regions converge to create one of seven areas of Global Botanical Significance. It's world-renowned for its animal and plant diversity. Mountcrest connects to the Cascade Siskiyou National Monument and the Rogue River National Forest, and straddles the crossroads of the Klamath, Siskiyou, and Cascades.

Years of careful management by the Parsons family have developed mixed-aged forests, with late-seral forest qualities, aspen stands, wet meadows, shrub fields, and riparian habitats. Ponds provide habitat for red-legged frogs and Western pond turtles; Elk, black-tailed deer, and black bear can roam woodlands and meadows. Great gray owls and goshawks love the mix of habitats for hunting and nesting.



The Forests of Mountcrest provide water to Neil Creek, Slide Creek, Wall Creek, Steinman Creek, Carter Creek, and Cottonwood Creek, as well as other important waterways.

## MOUNTCREST WORKING FOREST CONSERVATION EASEMENT



### Refuge for Northern Spotted Owls

Mountcrest's location makes it prime real estate for species that need special habitats or room to roam. Threatened northern spotted owls nest just over the border on the surrounding National Forest. Conserving Mountcrest's complex, older forests helps achieve goals for the owl's recovery, and also benefits species like the Pacific fisher, who are known to traverse the property.

### Whole and Complete

The Mountcrest Working Forest is the largest remaining non-industrial ownership in an area that has seen properties increasingly subdivided. Most of the private forestland in the area has been chopped up into rural residential parcels already, and the property's proximity to Ashland makes it a particularly tempting candidate for conversion.

### World-Class Recreation & Vistas

Flanking the scenic I-5 highway corridor, Mountcrest shows off Southern Oregon's lush green forests up to Mount Ashland for the hundreds of thousands of drivers who pass by each year. A section of the Pacific Crest Trail winds through the property, hosting thousands of backpackers annually and supporting Ashland's tourism-focused economy. From the Siskiyou Crest on a clear afternoon, you can look down on a sweeping vista of both California and Oregon woodlands.

### Conservation Easement Terms Protect a Heritage of Stewardship

The Mountcrest conservation easement will ensure this special property remains intact and largely undeveloped. Protecting the legacy of the Parsons' excellent stewardship, forestry at Mountcrest will continue to enhance habitat and watershed values for future generations. The easement terms call for selective harvests to sustain uneven aged stands, and retain rare and important habitat elements such as large old trees, standing dead trees, oaks, and aspens. About 40 acres of forest will be managed for old growth qualities, and 40 acres of oak woodlands will be maintained. 300 acres of meadow will be managed to enhance wetlands and riparian woodlands. Springs and streams will have extra protections and roads will be maintained to high standards to keep dirt from eroding into streams.

#### More information:

Connie Best, CoCEO  
cbest@pacificforest.org 415.561.0700 x 19

Mountcrest provides habitat for northern spotted owls, as well as goshawks, band tailed pigeons, olive-sided flycatchers, mountain quail, pileated woodpeckers, and great gray owls.



**PACIFIC FOREST TRUST**

Private Forests. Public Treasures.

**THE PRESIDIO**  
1001-A O'Reilly Avenue  
San Francisco, CA 94129  
[www.PacificForest.org](http://www.PacificForest.org)

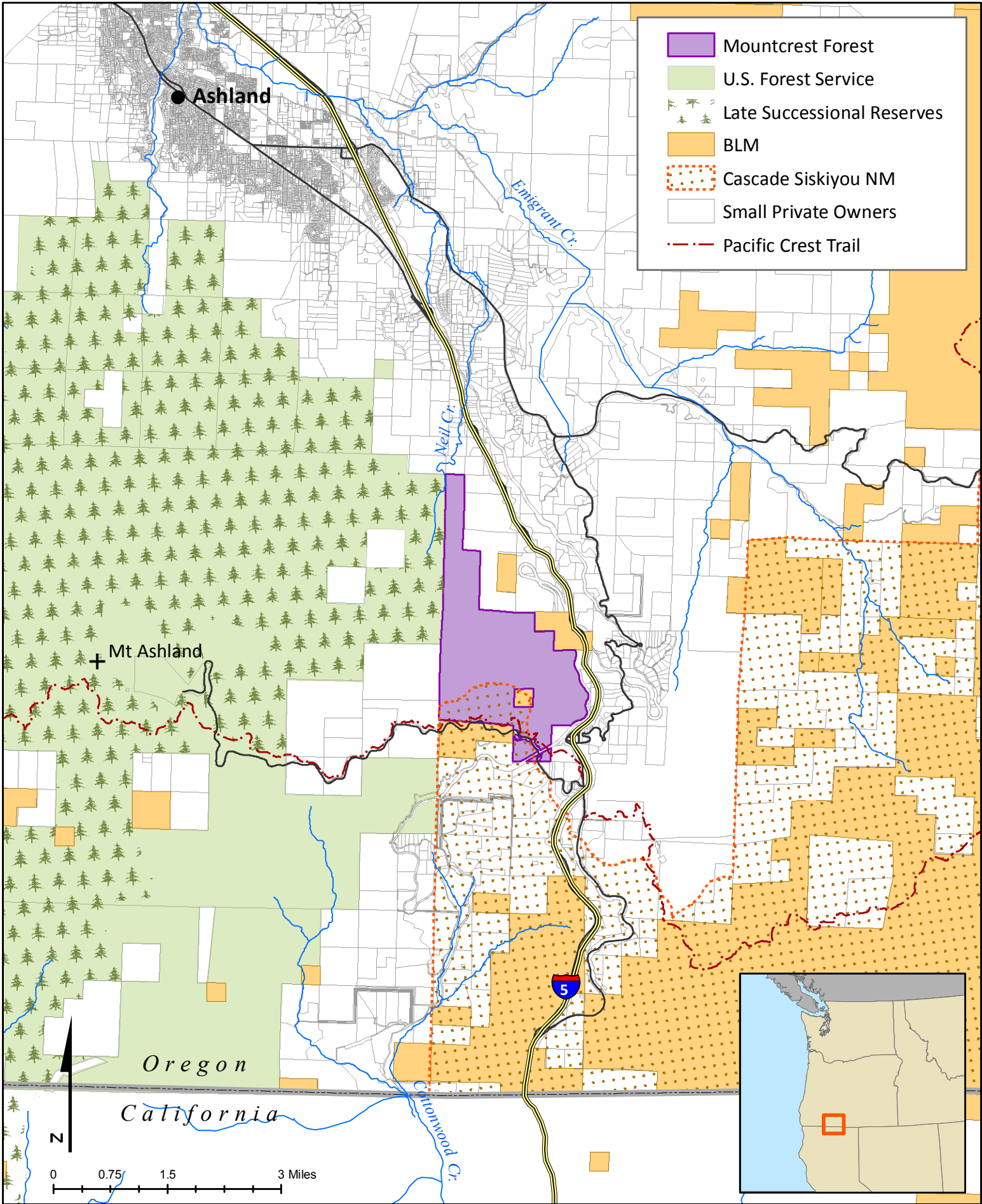


# Mountcrest Working Forest

Property Location



PACIFIC FOREST TRUST





# Mountcrest Working Forest

Proposed Special Habitat Management Zones (SHMZ)



PACIFIC FOREST TRUST

