

Saving Beavers, Headwaters, and Tall Timbers

McCLOUD SODA SPRINGS WORKING FOREST CONSERVATION EASEMENT

IN NORTHERN CALIFORNIA, AT THE EDGE OF THE HISTORIC MILL TOWN OF MCCLOUD, LIES THE 1,344+/- ACRE MCCLOUD SODA SPRINGS WORKING FOREST. NEIGHBOR TO RESIDENTIAL SUBDIVISIONS AND A GOLF COURSE, THIS BEAUTIFUL ROLLING WOODLAND, WITH TREMENDOUS VIEWS OF MT. SHASTA, WAS REZONED FROM TIMBER PRODUCTION TO RESIDENTIAL DEVELOPMENT BY ITS PREVIOUS OWNER, PRIMING IT FOR CONVERSION. SCHROLL TIMBERLANDS STEPPED IN TO BUY THE PROPERTY IN 2015 TO KEEP THIS FOREST AS A FOREST BY GRANTING A CONSERVATION EASEMENT TO SUSTAIN MANAGEMENT FOR WOOD, WATER, AND WILDLIFE IN PARTNERSHIP WITH PACIFIC FOREST TRUST.

Saving a Timber Heritage in a New Economy

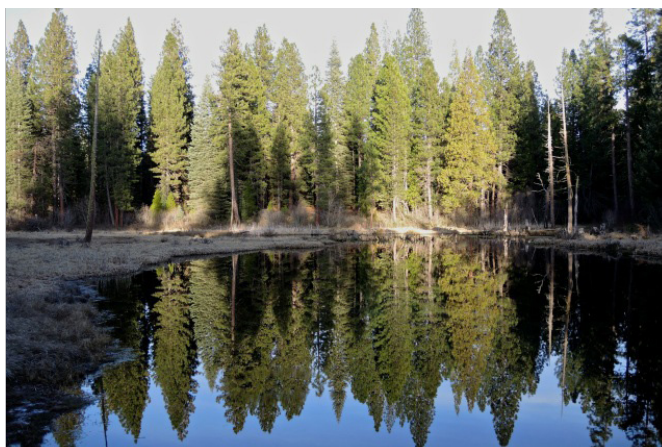
McCloud Soda Springs was home to native Americans and some of the first settlers in McCloud. It became part of the original McCloud Lumber Company lands over 100 years ago. Now, it is a key piece to a current puzzle: will sustainable forestry be able to continue as the life-blood of the old mill town—and resource-rich Siskiyou County—as the economy shifts to embrace more tourism, outdoor recreation, retirees, and associated development? Or, will rural residential sprawl encroach too far into the neighboring forests—increasing fire danger, fragmenting important habitats, and degrading the watershed?

Through the proposed conservation easement with Pacific Forest Trust, Schroll Timberlands wants to make a lasting commitment to forestry. The agreement will not only eliminate the rights to split the property and build up to 50 houses, it will guide management to

restore an older, more complex forest and wet meadow system; conserve the renowned Soda Spring; and protect other rare habitats, while sustainably producing wood products. The landowners believe that scenic beauty, natural wealth, and good jobs in the woods can all complement each other.

Protecting the Pristine Water of the McCloud Watershed

The McCloud River is famous not only for its native trout, but for the volcanic springs that provide abundant crystal clear, cold water flows into the huge Lake Shasta reservoir that sustains farms and cities as far away as San Diego, California. The McCloud Soda Springs Working Forest Conservation Easement will help ensure long-term protection not only to its namesake, Soda Spring, but also to Boy Scout Springs, two large spring complexes that feed Squaw Valley Creek, a major tributary to the McCloud River.





Rare and important wet meadows will be protected and restored!

Weaving Together Public and Private Forests

In a forest landscape where public and private ownerships are mixed together, Pacific Forest Trust is working with our partners to create a network of conserved working forests that provide strategic connections with public lands, such as the Shasta-Trinity National Forest. This work benefits wildlife, water quality, and the quality of life for residents and visitors. The Soda Springs property borders the 20 square mile McCloud Dogwood Butte Working Forest, recently conserved in a partnership between Hancock Timber Resource Group and Pacific Forest Trust. Together, their conservation will add to more than 50 square miles of protected working forests in the Mt. Shasta Headwaters region.

Home Improvement for the Wild Ones

Through management guided by the conservation easement, the diverse habitats on the McCloud Soda Springs property—including conifer forests, wet meadow systems, springs and creeks, oak woodlands, and aspen stands— will be enhanced for a wide variety of wildlife such as beavers, black bears, deer, mountain lions, willow flycatchers, and northern goshawks. The gray wolf is known to be nearby, as well as Pacific fisher. Brook, brown, and rainbow trout reside in Squaw Valley Creek on the property and beyond.

Working with Busy Beavers to Restore Wetlands

Working with the beavers at McCloud Soda Springs, we will be restoring the rare wet meadow habitats of vital importance to our source watersheds. Wet meadows act like big sponges that store water from winter snow melt and slowly dispense it for more consistent summer water flows when we need it most. This conservation project will promote restoration of formerly expansive wetlands on this property.

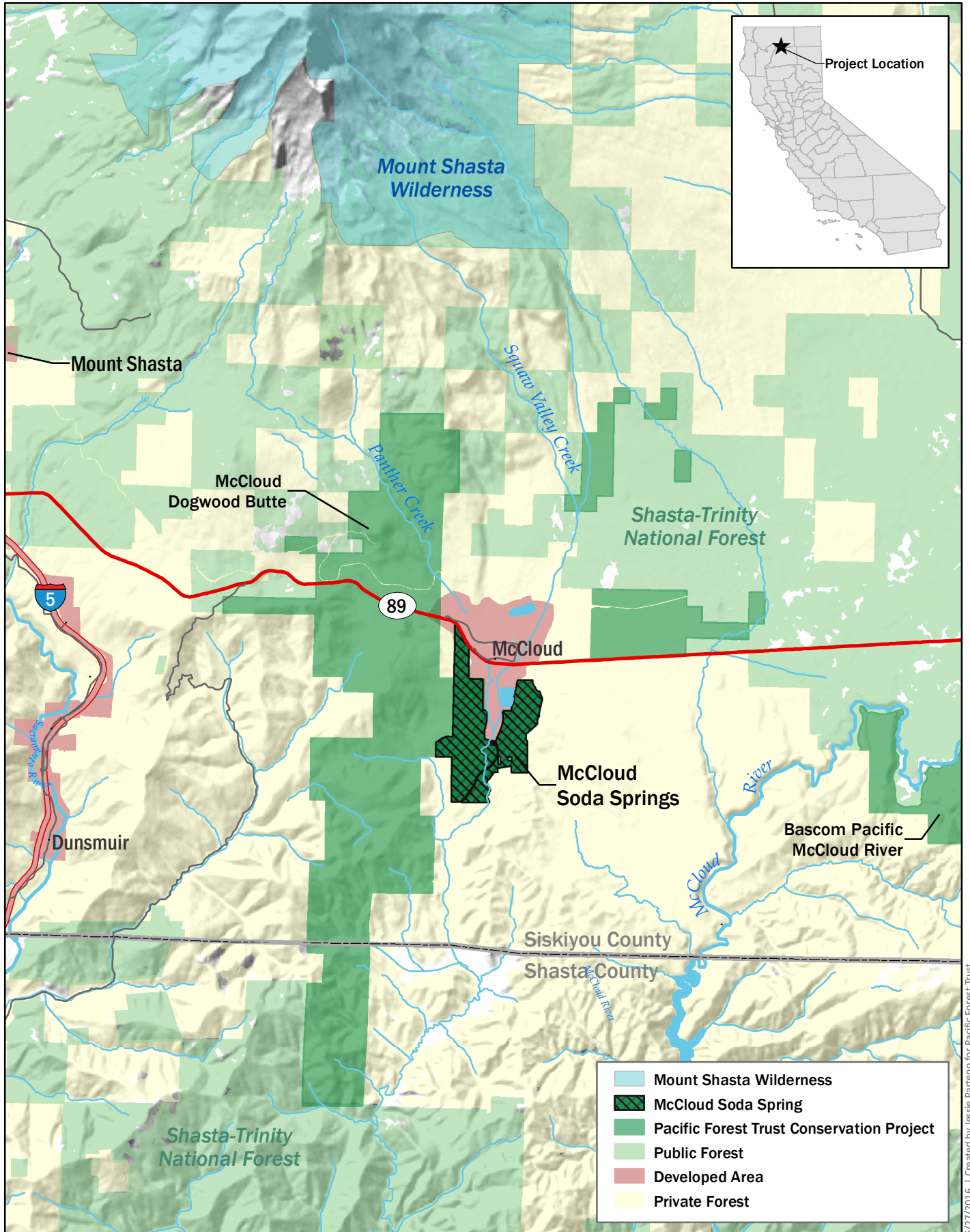
Managing Forests for Climate Resilience

Keeping private forests like McCloud Soda Spring intact and securing lasting connections among large blocks of natural lands are key strategies to help wildlife adapt to climate change. The conservation easement on McCloud Soda Springs will also encourage restoration of special habitats and rare habitat structures, providing homes and shelter for animals on the move. In addition, active management will reduce fire risks and increase forest carbon stores to mitigate climate change.

For more information contact:

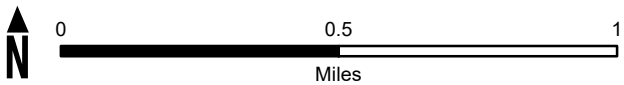
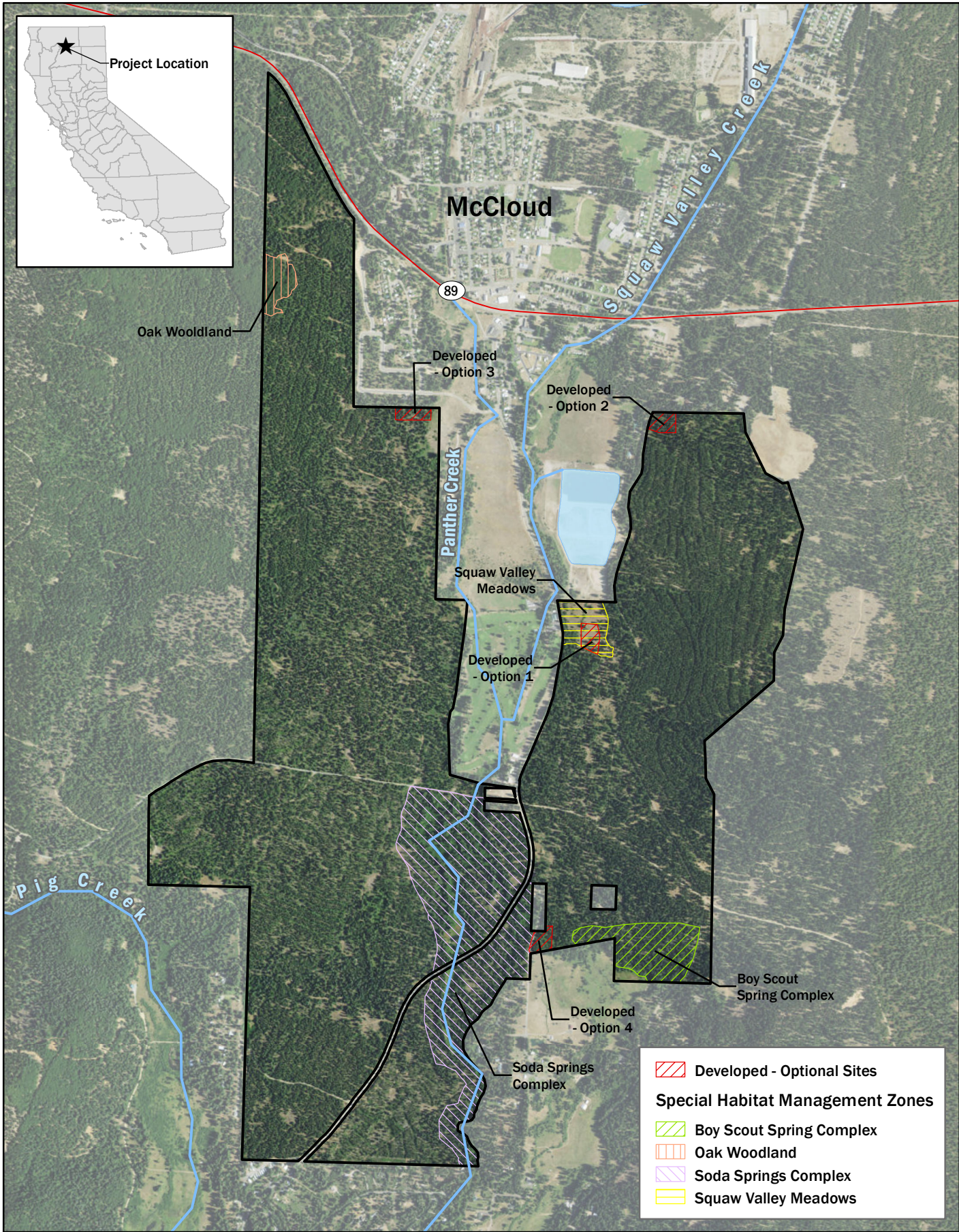
Constance Best, PFT Co-Founder and Co-CEO
415-561-0700 x19 or cbest@pacificforest.org





5/27/2016 | Created by Jessie Parteno for Pacific Forest Trust

**McCloud Soda Springs Working Forest
Project Location**



McCloud Soda Springs Working Forest Management Zones