

THE SIGNIFICANCE OF SUCCESS

Monument Supporters Speak Out

“The Cascade-Siskiyou National Monument’s topography, elevation gradients, varied geology and mild climate support a multiplicity of forest ecosystem types. PFT’s campaign will help fully protect this ecosystem – one of the most diverse, environmentally significant, yet threatened landscapes in North America.”

– Norm Christensen
Professor of Ecology, Duke University

“The GSNM contains rare habitats, including lower-elevation forest streams like Jenny Creek that provide essential habitat for very rare fish species. Jenny Creek is a jewel in the rough with great potential. Protecting and restoring such resources is vital for the ecoregion.”

– Jack Williams
Senior Scientist, Trout Unlimited

“The Klamath-Siskiyou region is a Noah’s Ark of botanical diversity. The Cascade-Siskiyou National Monument is the loading ramp to that ark, connecting the Cascade Range, Siskiyou Mountains, Great Basin and more in an ecological Mulligan’s Stew. PFT is doing essential work by acquiring, protecting and restoring these threatened private lands.”

– Dave Willis
President, Soda Mountain Wilderness Council

“The Monument contains an astonishing array of plant and animal species. New species of mollusks have recently been discovered and the Monument is home to one of the greatest concentrations of butterflies in the world.”

– Dominick DellaSala
Program Director, World Wildlife Fund

CASCADE SISKIYOU

CAMPAIGN TO COMPLETE THE VISION

NATIONAL MONUMENT



With towering fir forests, sunlit oak groves, wildflower-strewn meadows, and steep canyons, the Cascade-Siskiyou National Monument is an ecological wonder... home to a spectacular variety of rare and beautiful species of plants and animals, whose survival in this region depend upon its continued ecological integrity.”

– excerpt from Presidential Proclamation, June 9, 2000



Private Forests. Public Treasures.

The Pacific Forest Trust, a nonprofit, 501(c)(3) organization, was founded in 1993 to preserve, enhance and restore America’s private, productive forests. As a collaborative, problem-solving organization, we work with landowners, forest managers, public agencies, local communities and others to sustain private forestlands for the wealth of public benefits they provide.

Our efforts to raise awareness of the threats to America’s private forests, encourage innovations in stewardship forestry and promote incentives for long-term forest stewardship and conservation are aimed at forest stakeholders nationwide. As a specialized working forest land trust, our primary focus is on conservation in California, Oregon and Washington.



Conserving our Natural Treasures.
Crowning a National Jewel.

The Presidio • 1001A O’Reilly Avenue • San Francisco, CA 94129
pft@pacificforest.org • 707.578.9950 • www.PacificForest.org



design> Conscious Creative> consciouscreative.com  Printed on recycled paper.



CASCADE-SISKIYOU NATIONAL MONUMENT



Imagine the Statue of Liberty without her torch and tablet. Envision the St. Louis Gateway Arch rising high into the sky, but not returning to earth. Picture Mount Rushmore minus Presidents Roosevelt and Lincoln. If these implausible scenarios were reality, these national icons would be unmistakably incomplete and tragically flawed.

Luckily, we have no such worries with these American treasures.

The same, however, cannot be said of one of our nation's newest monuments, the Cascade-Siskiyou National Monument. Forty percent of this landscape remains unprotected. Much of that which is protected is divided in a checkerboard pattern, diminishing the effectiveness of that protection. Escalating

of the Great Basin with flora from the wet forests of the Pacific Coast. Thirty five hundred species – many found nowhere else on earth – call the Monument region home. Old-growth forests with 35 species of conifers, as well as alpine and riparian meadows with rare species including Greene's Mariposa lilies, Gentner's fritillaries and Bellingher's meadowfoam, are among the notable habitats protected in the CSNM.

Referred to as "the Galapagos of America," this region is considered outstanding globally as well as nationally. The World Conservation Union has named CSNM one of the United States' seven Areas of Global Botanical Interest and

Fredenburg pebble snail to magnificent mammals like elk and wolverines, the Monument is home to an impressive array of wildlife including Northern Spotted owls, Peregrine falcons, Pacific tree frogs, redband trout and 120 species of butterfly.

New Laws, New Owners Pose Threats

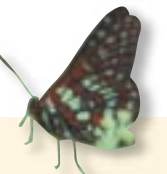
Unfortunately, only 60 percent (53,000 acres) of the Monument's total planning area (85,200 acres) is protected from development, owned by the Bureau of Land Management and managed to achieve the Monument's goals. The remaining

neighboring community of Ashland swelling at almost five percent a year, developers are actively pursuing the purchase and development of lands in and around the CSNM.

Adding to the threat is the recent passage of Oregon State's Ballot Measure 37. The new law calls for local governments to compensate landowners whose property has declined in value due to land use regulations. If governments cannot afford to pay, they must waive the land protection restrictions, paving the way, quite literally, for greater development.

If these trends continue, the promise of the Cascade-Siskiyou National Monument will be broken, it's unique treasures lost forever.

The Pacific Forest Trust has a different plan.



MONUMENTAL GOALS

- Complete the vision
- Protect the ecological integrity of the Monument and preserve its public benefits – water, wildlife, wilderness and wondrous biological diversity
- Unify the Monument under a common conservation strategy and shared stewardship practices



development encroaches at the CSNM's borders. Its magnificent and myriad natural treasures are in danger of being lost.

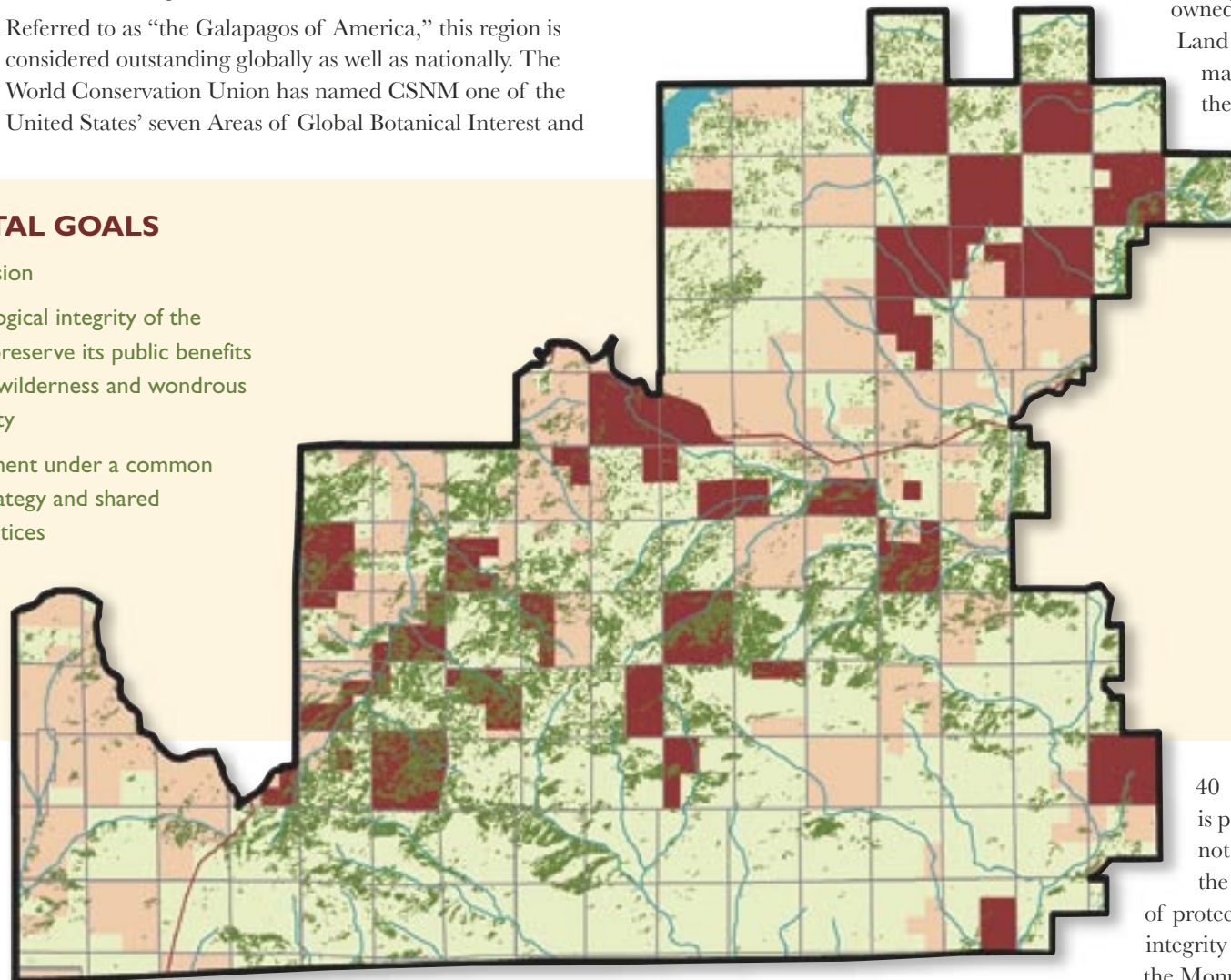
The Monument is not yet complete. The promise this irreplaceable landscape holds is yet to be fulfilled.

America's Ecological Jewel

Established by Presidential Proclamation in 2000, the Cascade-Siskiyou National Monument (CSNM) is located just north of the Oregon/California border in Jackson County, Oregon between Ashland and Klamath Falls. It is the first national monument designated specifically for its extraordinary biological diversity.

The Monument brings together plants from the high deserts

the World Wildlife Fund rates it high on their list of the 100 Most Threatened Ecosystems of Global Significance. The CSNM also provides critical habitat to several dozen rare, threatened and endangered animal species. Ranging from humble invertebrates such as the



MONUMENTAL HIGHLIGHTS

- Created by Presidential Proclamation on June 9, 2000
- Located north of the Jackson County, OR, on the Oregon/California border at the nexus of the Cascade and Siskiyou mountain ranges
- Total planning area: 85,200 acres
- Protected public land: 53,000 acres
- Unprotected private land: 32,200 acres
- Vital ecological assets:
 - Old-growth forests; grass and shrub lands; riparian, alpine, wetland and meadow habitats
 - Numerous threatened and endangered species including Bald and Golden eagles, Peregrine falcons, Northern Spotted owls, Cascade frogs and redband trout
 - A unique mix of high desert and wet forest plants including rare and endemic species such as Greene's Mariposa lily, Gentner's fritillaries and Bellingher's meadowfoam

40 percent (32,200 acres) is privately owned and not at all protected under the designation. This lack of protection threatens the integrity and purpose of the Monument.

Many of the lands in the Monument are now up for sale. And with each sale, subdivision and development that occurs, habitats are degraded and landscapes fragmented.

With the population of Jackson County growing at two percent a year (double the national average) and the

Connecting the Pieces. Conserving the Prize.

Our goal is to realize the vision of a wholly connected and conserved Monument.

By acquiring and conserving large tracts of privately owned land within the CSNM – through voluntary and willing transactions – we will create a more cohesive, fully protected landscape. When our efforts to protect the most vital watersheds, forestlands and biological habitats are successful, the vast majority of the Monument will be preserved and managed in accord with the goals set forth in the CSNM proclamation.

This is our *Cascade-Siskiyou National Monument Campaign to Complete the Vision.*

